

## The John Mitchell Award Lecture 2016

Wednesday 13<sup>th</sup> January 2016 at 18:30 hours

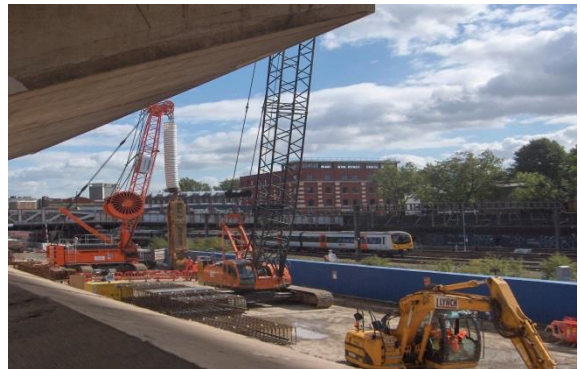
Institution of Civil Engineers, One Great George Street, Westminster, London SW1P 3AA

### Developments in geotechnical engineering & construction during the last 25 years – a personal perspective

**Dr Martin Pedley**  
BSc(hons) DPhil FICE CEng RoGEP  
Skanska

#### Summary

During the last quarter of a century the geotechnical community has witnessed many changes in design and construction practices. This lecture will give a personal perspective on these changes by reference to direct experience from a number of roles in the geotechnical engineering industry. Specific areas of focus will be the development of soil nailing, deep foundation construction & design and risk management. These areas will be discussed from the facets of design analysis, specification, technology and human interface and how they have impacted on the competences and capabilities of the geotechnical community.



#### Biography:



Dr Martin Pedley, a civil engineer by training, Fellow of ICE and Registered Geotechnical Advisor, has worked principally in the design and construction of deep foundations since completing his doctorate research in soil-reinforcement interaction in 1990. His career has been spent in both engineering and technical leadership roles, principally at Cementation Skanska, most recently as managing director. During this time he was involved in many major building and infrastructure schemes, including Crossrail, in the UK and overseas. He has been actively engaged in the development of new standards and specifications, drafting and sharing of best practice and research in support of new ground technologies. His current role is as a Vice President within Skanska's global risk management team.

*Disclaimer: Any views or opinions expressed on any matters by the presenters or participants during or in connection with any presentation are solely the views of the authors of the respective comments and/or opinions and must not be taken to be the views of ICE or the British Geotechnical Association or any other organisation. ICE and the BGA make no representations, warranties or assurances concerning any information provided in these presentations and accept no responsibility for the content and/or accuracy*